

The Digital Benefits Journey

Keith Williams

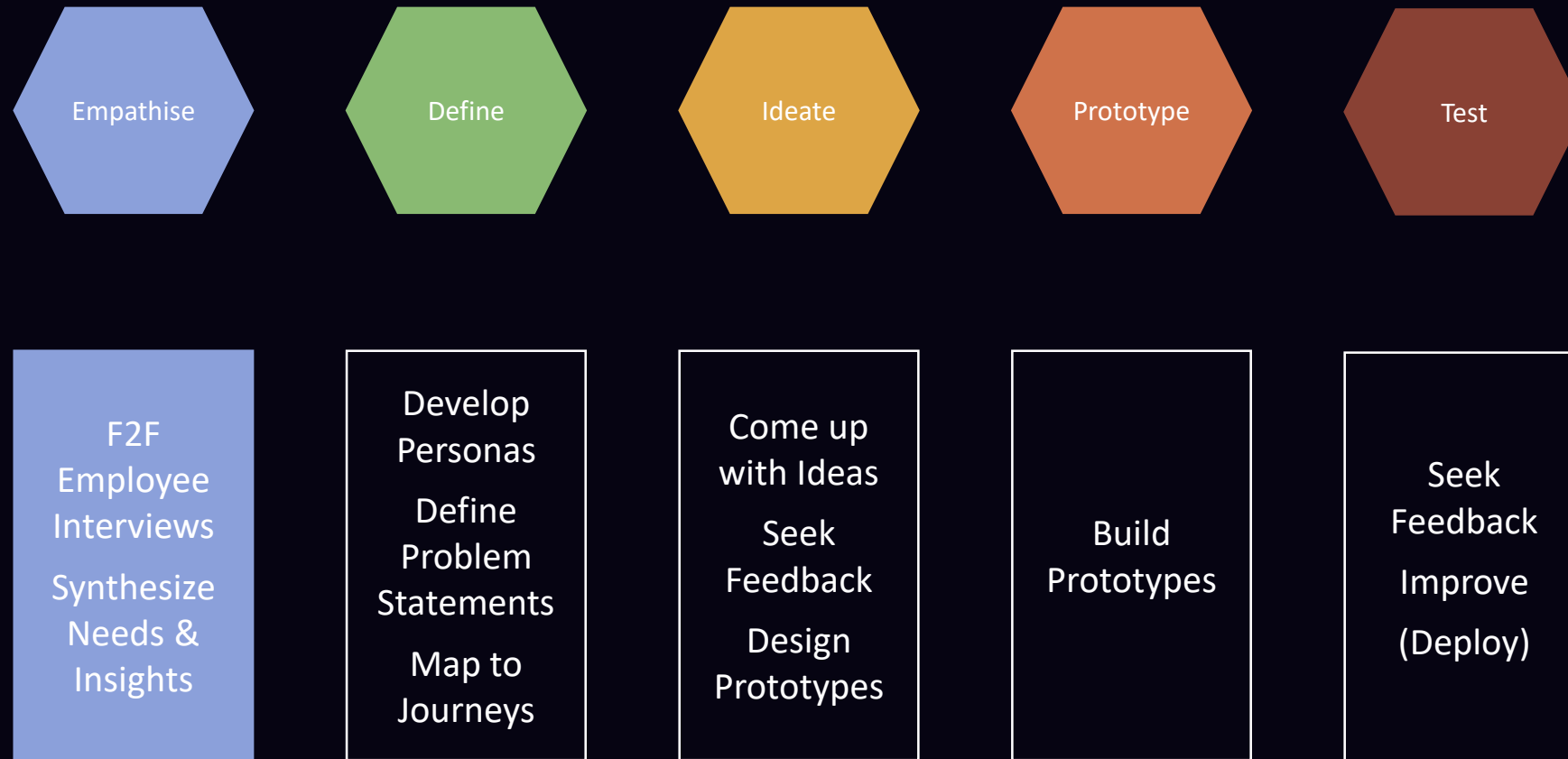
@KMW3_Innovation

Employees as Customers

“Applying a consumer and digital lens is **much more than just incorporating new solutions in HR.**

Being employee-centered and digital is about having a new mindset, plus a set of **consumer-focused** and technological skills which allow you to create new HR solutions.”

Employees as Customers – Design Thinking



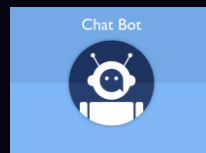
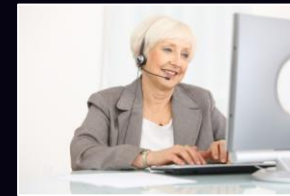
Employees as Customers



People who want
to self-serve



People who want
to talk to a human



Move people here

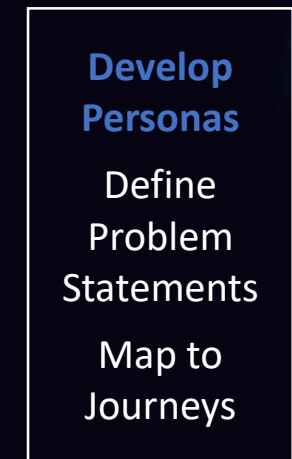
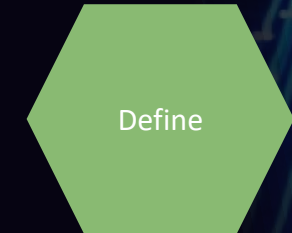
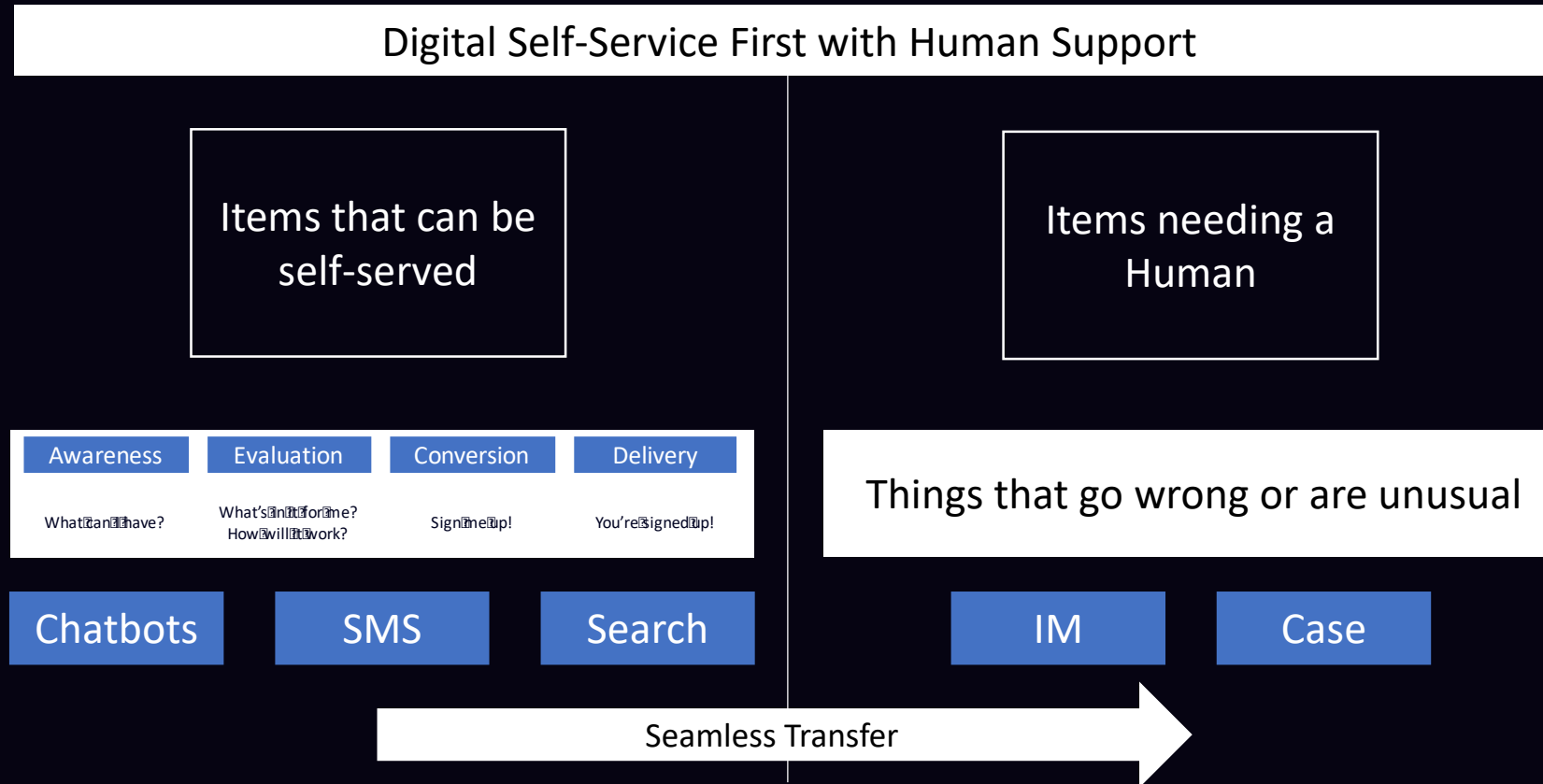
Define

**Develop
Personas**

Define
Problem
Statements

Map to
Journeys

Employees as Customers



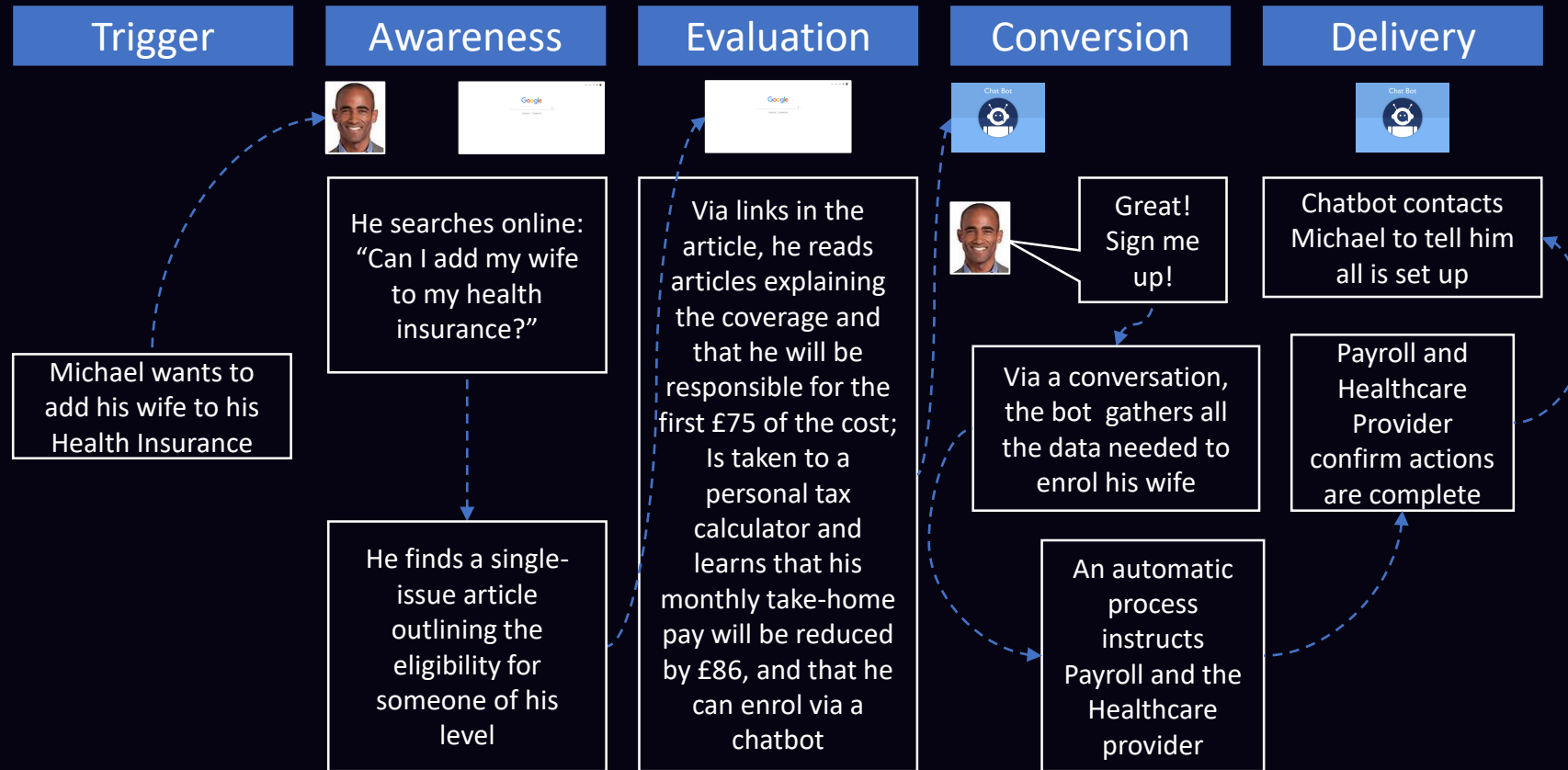
Employees as Customers

Trigger	Awareness	Evaluation	Conversion	Delivery
I need to! You need to!	What can I have?	What's in it for me? How will it work?	Sign me up!	You're signed up!
Got married and wants to add his wife to his health insurance	What is available to me?	How does it work and will I have to pay anything? What is the process? What will it do to my take home pay?	One stop shop	Get it right, first time, on time!
	Impossible to find. Complex Content		Multiple sites/channels	Too many mistakes

Define

Develop
Personas
**Define
Problem
Statements**
**Map to
Journeys**

Employees as Digital Customers



Content (vs Knowledge)



I don't know if I'm
allowed to sell my
vested shares!

General

Q. What causes my radishes to fail to bulb fail to bulb?

A. Radishes will fail to bulb for several reasons. Usually, they are not properly thinned and growing too close together. Radishes should be seeded 2 to 3 seeds per inch and then thinned when they are about 1 to 2 inches tall to a spacing of at least one inch apart. Radishes will also not bulb properly when forced to mature during temperatures above 80° to 85°F. They should be grown in full sun or close to that. Improper fertility, wither, starvation or high N can also create this problem.

Q. Sometimes my radishes have a hot, bitter flavor rather than the typical radish taste. What is the problem?

A. Generally, off-flavored radishes are due to planting at the wrong time or poor cultural practices such as low fertility or low moisture resulting in slow growth. For highest quality, radishes should grow fast. Fast growth can be brought about by adequate fertility and maintaining the soil in a good moisture condition.

Q. What causes roots of radishes to crack?

A. This is usually a matter of waiting too long before harvesting the radishes. Cracking is caused by fluctuations in moisture which causes the root to rapidly swell and crack. This is especially important near maturity or expected full size of the radish roots.

Q. Are the leaves of radish plants edible?

A. Radish leaves are not poisonous and can be consumed although they have a somewhat strong, bitter flavor. There may be some dishes or some methods of preparing radish leaves which would make them more palatable, but for the most part they lack a taste or flavor desired by most.

Q. What are winter radishes and how do they differ from regular garden radishes?

Trying to search **CONTENT** to solve a problem fails



Can I sell my
vested shares?



Yes!

Capture this Knowledge and make it available to
everyone who needs to know it

Using someone's **KNOWLEDGE** to solve a problem succeeds

Building a Knowledge Base

FROM

Lots of clever people sitting in a room and thinking up what people need to know in advance

FAQs in a 30 page document

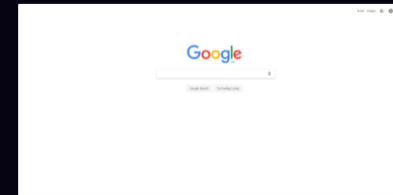
Teams deciding what the answers should be – lots of meetings with SMEs

Inconsistent structure and complex SME language

Impossible to find and use

Process-heavy correction procedure

TO



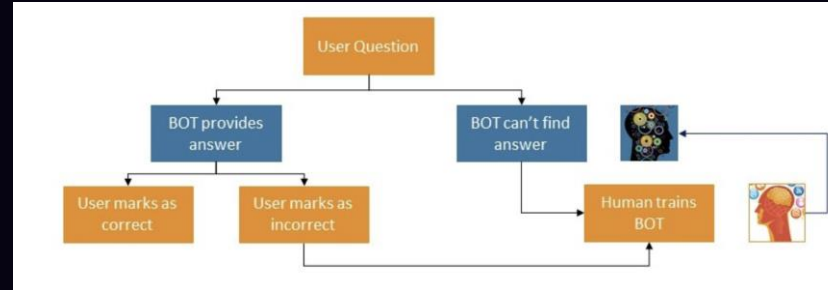
Knowledge Centred Support (KCS)

Leverages Knowledge as an Asset which is shared

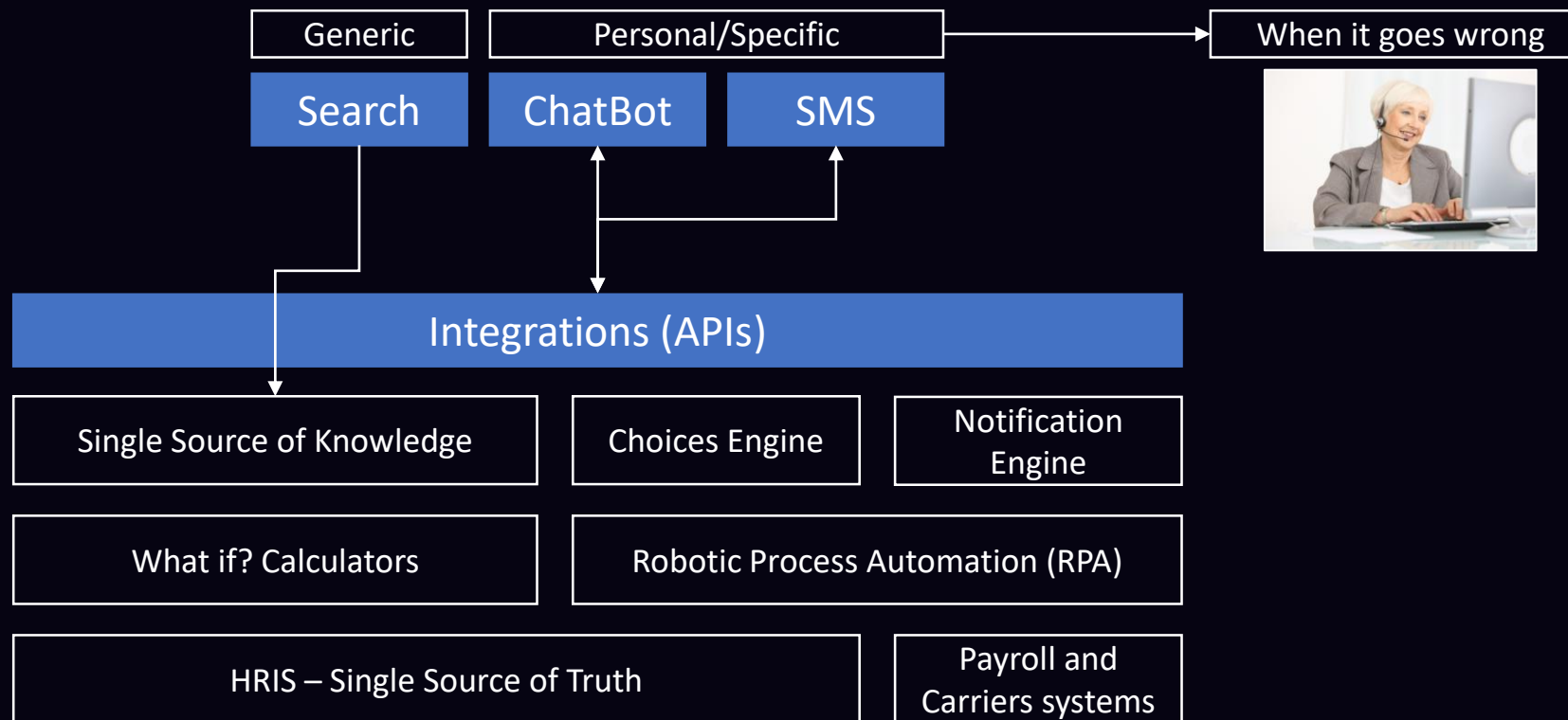
Chatbots

Chatbots

- Understand meaning by analysing Intents and Entities
- Are trained by humans to match Utterances to Intents
- Can answer questions by surfacing answers
- Can prompt for answers
- Can be linked to other data sources via Application Programming Interfaces (APIs)
- Can trigger processes (RPAs)



Below and Above the Line



Digital (Adjective)

Social, mobile, cloud, analytics, internet of things, cognitive computing, biometrics

Digitization (Noun)

Standardized business processes, operational excellence

Key Messages

Design an experience for your employees as if they were customers by using Design Thinking Techniques like a Digital Marketer

Maximise adoption - get a fantastic Change Team in place

Create Knowledge Articles for Goldfish

Chatbots are Children – teach them language

Understand the difference between Digital and Digitization - Digitize your processes first



@KMW3_Innovation